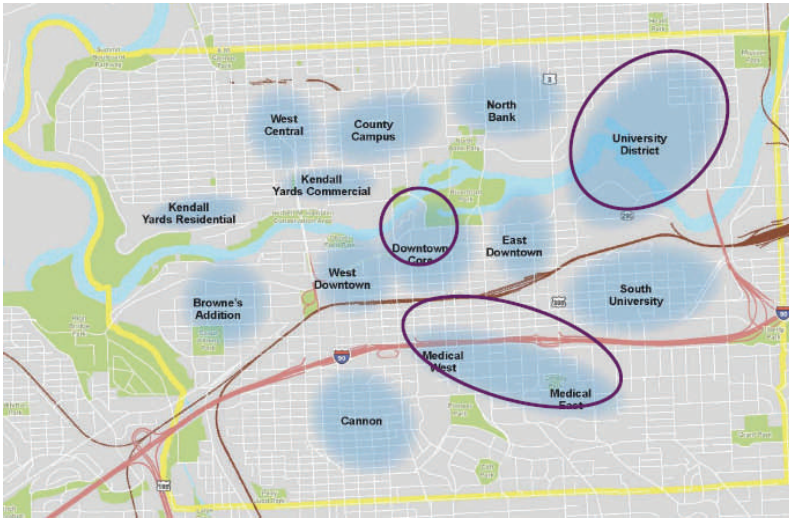
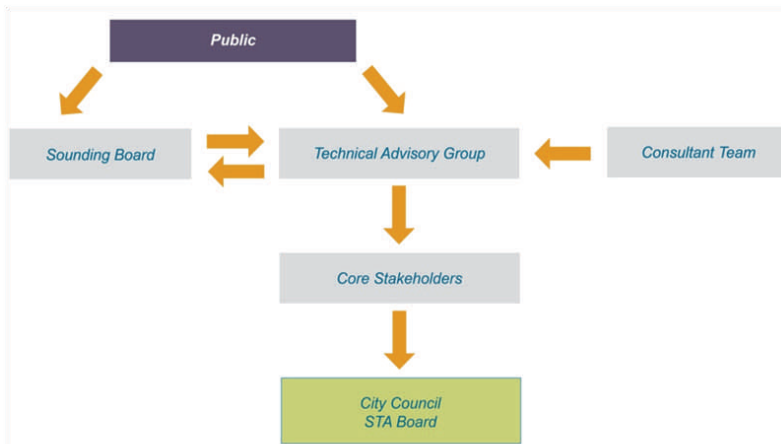


Project Study Area

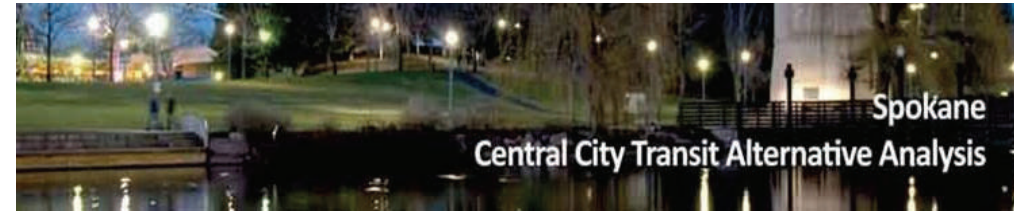


The project study area is outlined in yellow, and activity centers considered in the study area are shown in blue. The three principle activity areas for the study are circled.

Who's Involved?



For more information on the project:
www.connectspokane.org



Public Open House

October 26, 2010

3:30pm—7:00pm



Welcome!

The City of Spokane and the Spokane Transit Authority are working together to study a high performance transit service that will connect major activity centers within the downtown area.



Project Purpose

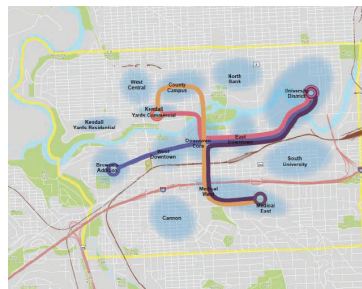
Provide a high performance transit investment that is the preferred mode for trips within Spokane's Central City.

This project will:

- Identify variety of potential transit investments
- Evaluate different alternatives and modes
- Select one preferred alternative to move forward

Short List of Alternatives:

1. Orange
2. Blue
3. Pink
4. Plum



Short List of Modes:

1. Modern Streetcar
2. Electric Trolley Bus
3. Enhanced Bus

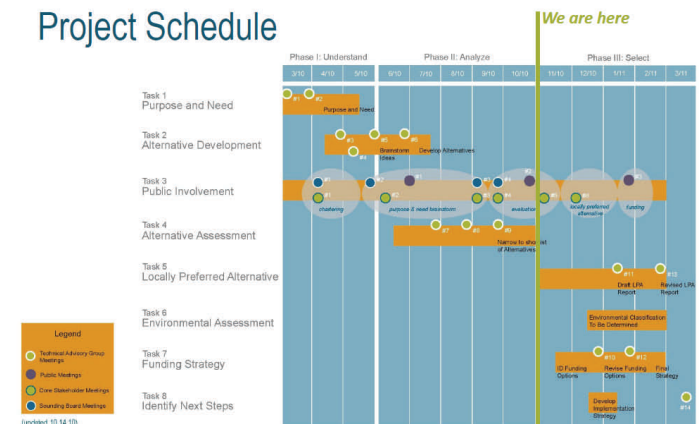
At the meeting tonight, we want your feedback on:

1. Which route alternatives are most important
2. The short list of modes
3. The evaluation criteria to be used in deciding which mode and route will be chosen

Next Steps:

1. Refine the short list of alternatives and modes
2. Refine the evaluation framework
3. Begin the evaluation process

Project Schedule



Comments

We want your feedback! Ways to give comments:

- Fill out a comment form
- Talk to a staff member
- Go online and fill out a comment form (www.connectspokane.org)